


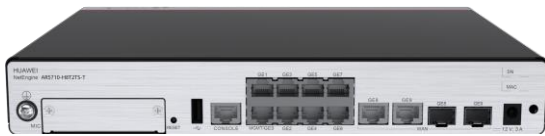
Huawei NetEngine AR5710 Series Enterprise Router Data Sheet

NetEngine AR5710 series enterprise routers are fixed-form-factor routers developed by Huawei for branches of enterprises to deliver high performance required by enterprise customers.

Product Overview

Huawei's next-generation NetEngine AR5710 series enterprise routers use high-performance multi-core processors and a non-blocking switching structure, helping to deliver higher forwarding performance than the industry average.

The NetEngine AR5710 series consists of models such as NetEngine AR5710-H8T2TS1, NetEngine AR5710-H8T2TS1-T, which can meet networking requirements of enterprises of different scales.

| | |
|---|--|
|  <p>NetEngine AR5710-H8T2TS1</p> | <ul style="list-style-type: none"> Fixed WAN ports: 2*GE Combo Fixed LAN ports: 8*GE electrical Dimensions (H x W x D): 44.0 mm x 300.0 mm x 220.3 mm |
|  <p>NetEngine AR5710-H8T2TS1-T</p> | <ul style="list-style-type: none"> Fixed WAN ports: 2*GE Combo Fixed LAN ports: 8*GE electrical Dimensions (H x W x D): 44.0 mm x 300.0 mm x 220.3 mm |

Features and Highlights

Features and Highlights of NetEngine AR5710

| Service Requirement | Features and Highlights |
|---------------------|--|
| High performance | <ul style="list-style-type: none"> ARM multi-core processor and non-blocking switching architecture Industry-leading performance, providing low latency required by key services |
| High reliability | <ul style="list-style-type: none"> Link backup for enterprise services, improving reliability Fault detection and locating within milliseconds, reducing service downtime |
| Easy O&M | <ul style="list-style-type: none"> Multiple management modes such as management through iMaster NCE-Campus and SNMP, simplifying network deployment and reducing OPEX |

| Service Requirement | Features and Highlights |
|---------------------|---|
| SD-WAN Ready | <ul style="list-style-type: none"> Built-in SD-WAN solution, building cost-effective and business-friendly connections over the Internet Application identification and link quality-based intelligent traffic steering, ensuring key application experience Multi-link traffic steering and Dual-gateway sites flexible networking End-to-end IPsec encryption, ensuring secure service transmission |

Architecture Highlights of Huawei NetEngine AR5710

| Highlight | Benefits |
|----------------------|---|
| Multi-core processor | High-speed WAN connections and powerful routing and computing capabilities, improving L4-L7 service processing efficiency |

Product Specifications

| Specifications | NetEngine AR5710-H8T2TS1/ NetEngine AR5710-H8T2TS1-T |
|--|---|
| Processor | ARM64 (4-core) |
| SD-WAN service performance | 800Mbps |
| Fixed WAN ports | 2*GE Combo |
| Fixed LAN ports | 8*GE electrical |
| MIC slot | 1*MIC |
| Auxiliary or console port | 1* RJ45 Console |
| USB port | 1*USB |
| Memory | 4GB |
| Flash | 2GB |
| TPM | Only NetEngine AR5710-H8T2TS1-T Supported |
| Dimensions without packaging (H x W x D) | 44.0 mm x 300.0 mm x 220.3 mm |
| Dimensions with packaging (H x W x D) | 110.0 mm x 435.0 mm x 360 mm |
| Weight without packaging | 1.8 kg |
| Rack | IEC |
| Occupied rack space | 1U |
| Rated input voltage (V) | 100V to 240V, 50 Hz/60 Hz |

| Specifications | NetEngine AR5710-H8T2TS1/ NetEngine AR5710-H8T2TS1-T |
|------------------------------|---|
| Input voltage range(V) | 90V to 264V |
| Maximum input current (A) | 3A |
| Maximum output power (W) | 36W |
| Maximum power consumption(W) | 29W |
| Fan modules | Built-in unpluggable fan modules |
| Airflow | Left to right |
| Noise | 41.9dB |
| Operating temperature | 0°C ~ 45°C |
| Operating humidity | 5% to 95% (non-condensing) |
| Operating altitude | < 5000 m |
| Storage temperature | –40°C to + 70°C |
| Operating altitude | < 5000 m |

Software Features and Protocols

| Item | NetEngine AR5710 Series |
|----------------------------|---|
| Basic function | DHCP server/client/relay, NAT, and sub-interface management |
| LAN | IEEE 802.1P, IEEE 802.1Q, IEEE 802.3, VLAN management, MAC management, STP/RSTP/MSTP |
| IPv4 unicast routing | Routing policies, static routes, RIP, OSPF, IS-IS, BGP, IP FRR |
| IPv6 unicast routing | Static routes, routing policies, RIPng, OSPFv3, IS-ISv6, BGP4+ |
| Basic IPv6 function | IPv6 ND, IPv6 PMTU, IPv6 FIB, IPv6 ACL, ICMPv6, DNSv6, DHCPv6 |
| Tunneling | GRE tunnel, NAT STUN, IPsec |
| VPN | GRE VPN, SD-WAN EVPN |
| QoS | Priority mapping, traffic policing (CAR), traffic shaping, congestion avoidance, congestion management, MQC (traffic classifier, traffic behavior, and traffic policy), hierarchical QoS, Smart Application Control (SAC) |
| Security | ACL (v4/v6), firewall, AAA authentication, RADIUS authentication, HWTACACS authentication, PKI, broadcast storm suppression, ARP security, ICMP attack defense, CPCAR, attack source tracing |
| Management and maintenance | Upgrade management, device management, GTL, SNMP (v1/v2c/v3), RMON, NTP, USB-based/DHCP deployment, Email deployment, NETCONF/YANG, CLI, TCP FPM, NQA |

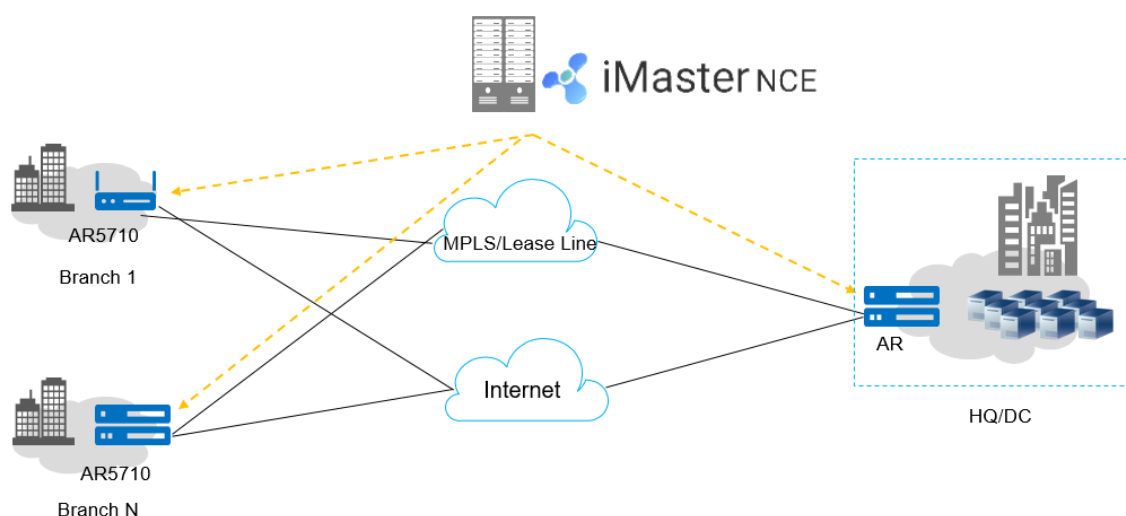
| Item | NetEngine AR5710 Series |
|------------------------------------|---|
| EMC standards compliance | <ul style="list-style-type: none"> •CISPR32 Class A •EN 55032 Class A •CISPR24 •EN 55024 •ETSI EN 300 386 •AS/NZS CISPR32 Class A •FCC Part 15 Subpart B Class A •ICES 003 Class A •IEC 61000-3-2 •EN 61000-3-2 •IEC 61000-3-3 •EN 61000-3-3 •GB 9254 •VCCI-CISPR32 Class A |
| Environmental standards compliance | <ul style="list-style-type: none"> •RoHS •REACH •WEEE |
| Security standards compliance | <ul style="list-style-type: none"> •IEC 60950-1 •EN 60950-1 •UL 60950-1 •CSA C22.2 No 60950-1 •GB 4943.1 |

Application Scenarios

In the SD-WAN solution, the AR5710 functions as the gateway of the enterprise headquarters or branch and supports extensive physical links, such as MPLS and Internet links. iMaster NCE-Campus provides visualized management for the AR5710. The AR5710 integrates a wide range of SD-WAN features such as intelligent application identification and intelligent traffic steering, delivering better service experience to enterprises. For details about Huawei SD-WAN Solution, visit

<https://e.huawei.com/en/solutions/business-needs/enterprise-network/sd-wan>.

SD-WAN networking



Ordering Information

The configuration of the NetEngine AR5710 series includes host selection and software configuration.

- **Host**
Select the device model according to the uplink interface type and service requirements.
- **Software**
- The basic software and licensed software are available. The basic software provides basic functions, such as routing, switching, voice, and security. The licensed software provides additional functions, such as AC.

| Host | Ordering Information |
|----------------------------|---|
| NetEngine AR5710-H8T2TS1 | AR5710-H8T2TS1,2*GE combo WAN,8*GE LAN,1*USB,1*MIC slot |
| NetEngine AR5710-H8T2TS1-T | AR5710-H8T2TS1-T,2*GE combo WAN,8*GE LAN,1*USB,1*MIC slot |
| License | Ordering Information |
| | |
| | |

More Information


For more information, visit <https://e.huawei.com/en/> or contact us in the following ways:

- Global service hotline: <http://e.huawei.com/en/service-hotline>
- Logging in to the Huawei Enterprise technical support website: <http://support.huawei.com/enterprise/>
- Sending an email to the customer service mailbox: support_e@huawei.com

Copyright © Huawei Technologies Co., Ltd. 2021. All rights reserved.

No part of this document may be reproduced or transmitted in any form or by any means without prior written consent of Huawei Technologies Co., Ltd.

Trademarks and Permissions

 HUAWEI and other Huawei trademarks are trademarks of Huawei Technologies Co., Ltd.

All other trademarks and trade names mentioned in this document are the property of their respective holders.

Notice

The purchased products, services and features are stipulated by the contract made between Huawei and the customer. All or part of the products, services and features described in this document may not be within the purchase scope or the usage scope. Unless otherwise specified in the contract, all statements, information, and recommendations in this document are provided "AS IS" without warranties, guarantees or representations of any kind, either express or implied.

The information in this document is subject to change without notice. Every effort has been made in the preparation of this document to ensure accuracy of the contents, but all statements, information, and recommendations in this document do not constitute a warranty of any kind, express or implied.

Contact Us

Skype: wendycisco

WhatsApp: +852-57008326

E-mail: wendy@donewin.com.hk

Website: [https:// www.uritprice.com](https://www.uritprice.com)

Huawei NetEngine AR5710 Enterprise Router Data Sheet